

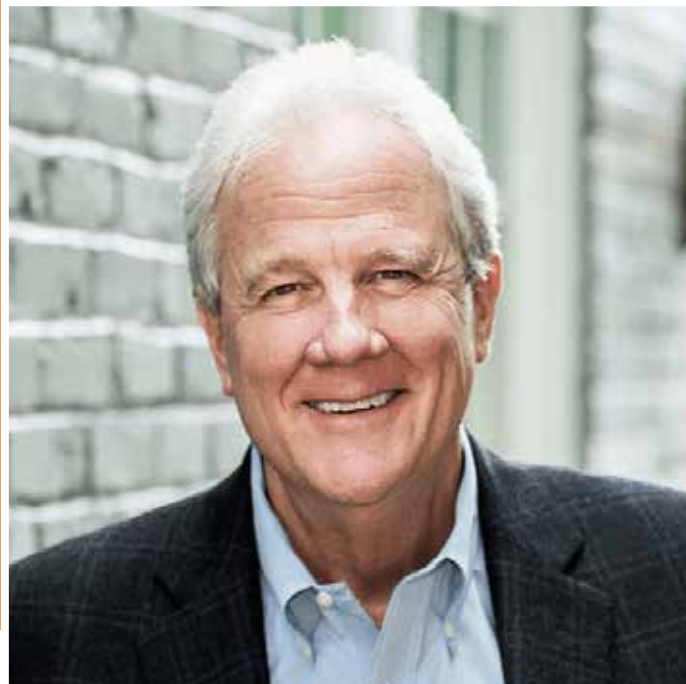


2022 GRATITUDE REPORT



YOUR SUPPORT IS KEY!

**BECAUSE OF YOUR PARTNERSHIP, LIVES WERE SAVED
AND CHANGED IN 2022!**



YOUR 2022 IMPACT

A MESSAGE FROM THE CEO

Friends,

We are thrilled to share with you the impact your continued generosity is having on patients and families we serve across the greater Charlotte area and surrounding North and South Carolina regions! Even amidst uncertain times, our donors and community partners contributed generously to our mission. We celebrate these gifts as we head into another year of serving our neighbors and positively impacting the Charlotte community.

Thank you for your support that makes our work possible.

With Gratitude,

Charles Odell, President and CEO



Delivering Help & Hope

1224 PEOPLE SERVED IN 2022

KEY Statistics



Addiction

to alcohol and other drugs impacts one in three households in America.



Overdose

deaths now cause more deaths in North Carolina than car crashes and guns.



One in Five

adolescents abusing substances will develop an addiction.

840

CALLS FOR HELP



218

FAMILY PROGRAM

223

PATIENT ASSESSMENTS

144

PATIENTS TREATED

Over Three Decades Strong

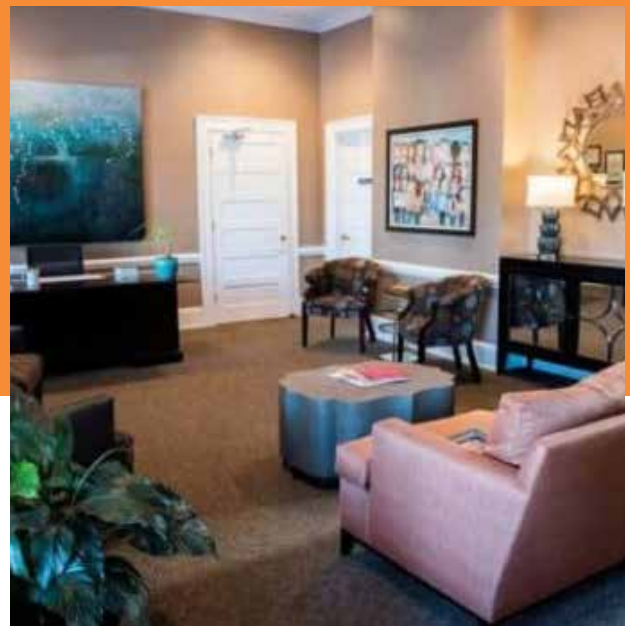
Founded in 1990, Dilworth Center offers outpatient treatment services to the Charlotte community & surrounding North and South Carolina regions to help break the chains of addiction so they can be productive, thriving members of society.

Our program is considered the gold standard of addiction treatment by many providers in the community.

Dilworth Center provides uniquely tailored, comprehensive treatment programs to establish abstinence from alcohol & other drugs with an emphasis on ongoing, productive recovery.

We partner with the myriad of systems (family, school, professional, religious, social) in which a patient operates & work with over 250 referral sources to thoroughly address issues impacting a patient's addiction; identifying specific, critical services needed for recovery.

Dilworth Center provides a warm, family-like atmosphere and a comfortable and safe environment for patients and their families.



“To say I was in bad shape would be an understatement. I had - at the age of 16 - become a crack and cocaine addict, using every day, non-stop. When I went in for my assessment at Dilworth Center, I was told that I never had to live that way again. I had MANY trials along the way, but thanks to the care and determination of the counselors at Dilworth Center, I was introduced to a solution for so many of my demons. This place is where I began my journey, and it gave me the tools I use every moment to approach life in a healthy way today.”

--Alumnus

FoRSE

Dilworth Center works to improve addiction treatment through science, technology, and education.

Addiction is a chronic brain disease that affects every element of life: body, mind, and spirit.

Addiction spares no demographic, no segment of society; it disregards economic, racial, religious, political, social, gender, and geographic distinctions. Addiction harms individuals and destroys families, friendships, and employment relationships. Unlike other chronic diseases, there has been no standardized measurement system for substance use disorder (SUD) treatment outcomes, which makes it difficult to measure recovery or clearly understand the impact of treatment on people's lives.

Dilworth Center is working to solve this problem.

Dilworth Center is one of 61 treatment centers participating from across the country in a science collaborative in which treatment programs of all sizes, types, models and payment structures share treatment outcome data in a centralized data repository to build consensus on measures that inform quality care of SUD.

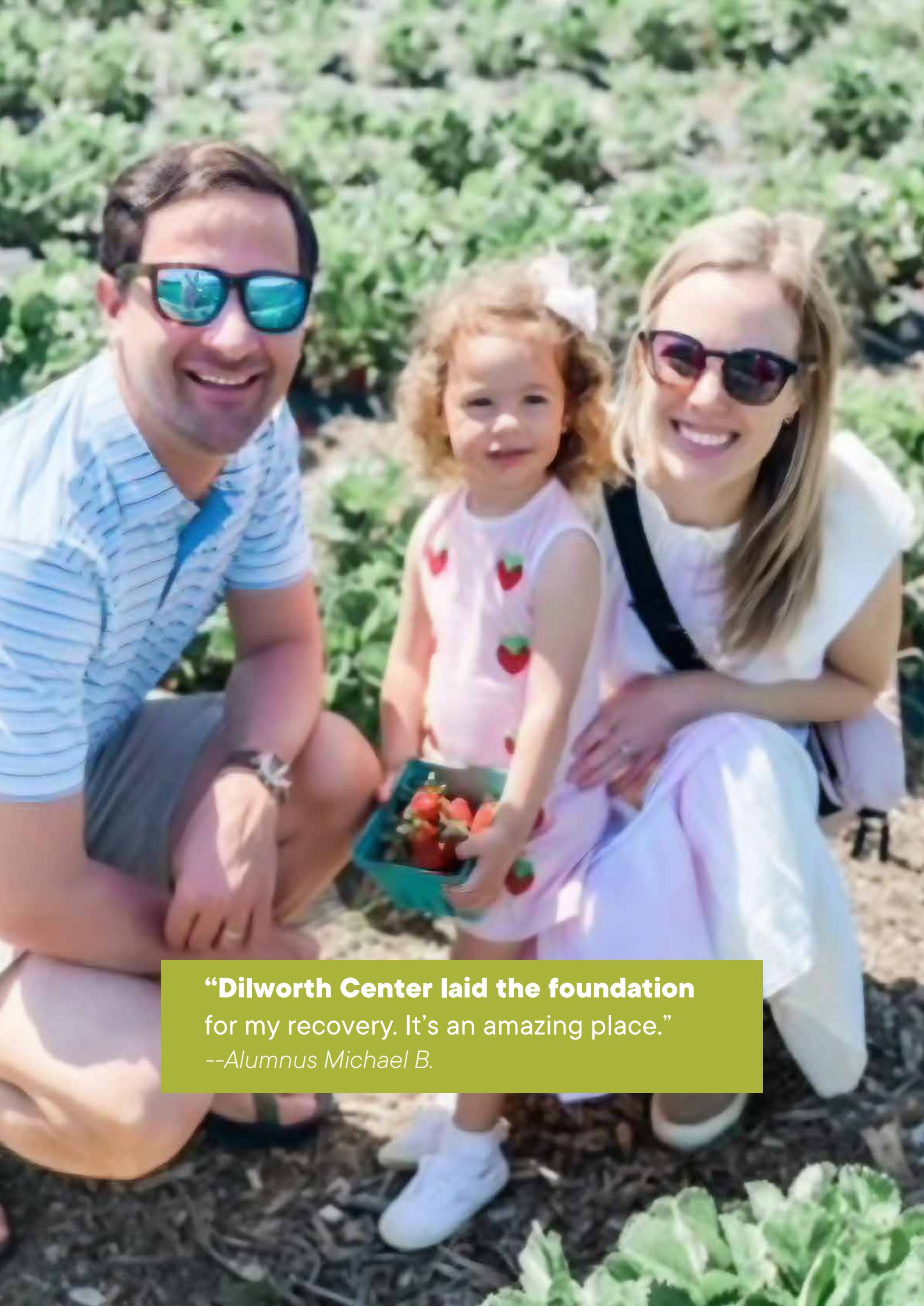
The NAATP Foundation for Recovery Science and Education (FoRSE) is a nonprofit organization that was formed to answer the most pressing questions facing the field:

- Is addiction treatment effective?
- Can treatment transform body, mind, and spirit?
- What treatments work best for whom?

Data collected include demographics, social determinants of health, length of stay, type of service, SUD medications, and patient-reported outcomes including substance use and health consequences, craving, mental health symptoms, recovery capital, and post-discharge functioning and quality of life.

As we progress with this collaborative work, Dilworth Center will be able to demonstrate the value of addiction treatment and examine differences in outcomes across levels and systems of care and across patient demographics. We will better understand how social determinants of health impact our patients, and how to structure interventions to help them build recovery capital. Ultimately, demonstration of treatment effectiveness can influence public opinion and public policy in order to reduce stigma and increase access to quality care.

“Dilworth Center is A++. The staff and counselors are top notch and like family. The care is holistic as it encompasses body, mind and spirit. Dilworth Center treats the entire family with compassion as addiction is a family disease. We are forever indebted to the counselors and staff for the excellent care we experienced at Dilworth!” --*Family Member*



**“Dilworth Center laid the foundation
for my recovery. It’s an amazing place.”**
--Alumnus Michael B.



'Key to Recovery'

The Christina Browning Scholarship Fund was established in 2016 in order to provide financial assistance to those who would not otherwise be able to afford treatment. The Fund is named in memory of board member Peter Browning's daughter, Christina Lynne Browning. More than 1.9 million in scholarship funds have been raised since 2017.



\$420,000

Dilworth Center aims to assist every person who reaches out to us for help, without discrimination of age, ethnicity, race, economic status, gender or sexual identification. Dilworth Center's 2022 'Key to Recovery' annual fundraiser raised over \$420,000 to assist patients who otherwise could not afford the cost of treatment. We strive to keep the cost of our program low to help reduce barriers to treatment services.

Thank You to Our Community Partners

The Dowd Foundation

The Sherrill Family

Will Close

Margaret and Smoky Bissell



Kathy and Peter Browning

McNeill Charitable Foundation

Anonymous



The Carey Cox Wyatt Foundation

Moore & Van Allen



Gay Boswell



Karen White



SIGNATURE FD



Leslie & Mitchell Wickham



Sue Coe



Key Services



Assessments



Adult Outpatient



Family Programs



Adolescent Outpatient



Kids Programs



Young Adult Outpatient



Relapse Prevention





“From the initial assessment to graduation/commencement, I felt welcomed, safe, loved and supported.” --*Patient*

“Dilworth Center is a welcoming, professionally run community for anyone seeking help with substance abuse for themselves or for family members.” --*Referral*

“Having battled addiction myself and lost a son to this disease, I support the work of Dilworth Center and am so grateful it is there not only to help the addict/alcoholic but the whole family. What an excellent, incredible resource in our community.” --*Board Member*



“I highly recommend investing your time in a program built for success and surrounded with kindness like Dilworth Center.” --*Alumnus*

Socially Responsible. Community Invested.

Diversity, Equity & Inclusion

Dilworth Center's Board Member Reggie Willis is on a mission – to create space for all, both internally and in the Charlotte community. He is Ally's Chief Diversity Officer and was recognized in 2023 as one of Savoy's Most Influential Leaders in Diversity and Inclusion.

Reggie has generously offered to help Dilworth Center set its vision and direction of DE&I initiatives to reinforce Dilworth Center's deep commitment to caring for the community its treatment services support.

Dilworth Center is excited to partner with Reggie knowing he has a distinct vision for what the organization wants to achieve, a well-defined roadmap for accomplishing it, and an unwavering understanding of the significance of it all.



“Addiction doesn’t discriminate, and it’s important that we have resources for anyone looking for help. The Dilworth Center is that resource, and has been the most rewarding organization I’ve had the privilege to be a part of. The compassion and professionalism they exhibit in caring for each client is unmatched.” – Reggie Willis, Dilworth Center Board of Directors

Advancing Health Equity



NATIONAL ASSOCIATION
OF
ADDICTION TREATMENT PROVIDERS

Dilworth Center is a key partner with the National Association of Addiction Treatment Providers 'Foundation for Recover Science Education' (FoRSe) to study treatment effectiveness for substance use disorders.

The Vision of FoRSE includes using data, collaborative research, and education to improve quality of care and to advance health equity. FoRSE is committed to supporting systemic change toward racial and social equity in access to treatment and recovery support services.

A LOOK AHEAD

This year's keynote speaker for the 7th Annual Christina Browning 'Key to Recovery' Scholarship Breakfast is Janine Turner, an Emmy and three-time Golden Globe-nominated actress known to millions of fans for her role as Maggie O'Connell in the hit CBS television series, Northern Exposure.

As a recovering alcoholic with two decades of sobriety, Janine will discuss her own battle with alcoholism while sharing a powerful and inspiring message of hope and faith that substance abuse can be successfully conquered.



Keynote Speaker Janine Turner

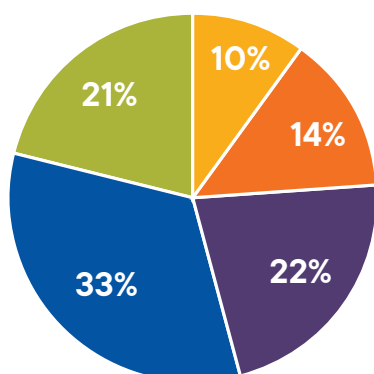
Mark Your Calendar!
7th Annual Christina Browning 'Key to Recovery' Scholarship Breakfast
September 7, 2023 | 8-9am

Dilworth Center
UNLOCK YOUR RECOVERY

YOUR LEGACY OF GIVING

By including Dilworth Center in your will or estate plan, you ensure that your heart for others will continue to impact lives far into the future. For information about making a gift to Dilworth Center's endowment or to join our Keystone Legacy Society, please contact Dilworth Center's Director of Development: Cynthia Sims at cynthia@dilworthcenter.org or (704) 372-6969.

FINANCIAL IMPACT AT-A-GLANCE



- 10% ABC
- 14% Corporate
- 22% Endowment
- 33% Individuals
- 21% Foundations



2022 BOARD OF DIRECTORS

GAY BOSWELL
COMMUNITY VOLUNTEER

BRIAN BRIDGFORD
GAMBRELL FOUNDATION

PETER BROWNING
PETER BROWNING PARTNERS
TREASURER

STEVE DEGEORGE
ROBINSON BRADSHAW

CHRIS ELLIOTT
GLANDON CAPITAL

MARTIN GODWIN
CAMERON CARMICHAEL
BOARD CHAIR

ZYGMUNT JABLONSKI
COMMUNITY VOLUNTEER

FRED OATES
COMMUNITY VOLUNTEER

MARY YORKE OATES
CHARLOTTE LATIN SCHOOL

CHARLES ODELL
DILWORTH CENTER
PRESIDENT

REGGIE WILLIS
ALLY BANK
SECRETARY



Dilworth Center

UNLOCK YOUR RECOVERY



EVERYTHING WE DO IS LED BY OUR MISSION:

To provide effective and affordable treatment services for individuals and families affected by alcoholism and drug addiction.

Contact Us

2240 Park Road Charlotte, NC 28203

Phone: 704-372-6969

Email: cynthia@dilworthcenter.org

Web: www.dilworthcenter.org